



# Eccleston St Mary's C of E Primary School

Newsletter 12 | 29th November 2024

# SCHOOL NEWS

Our Motto:  
Believe & Achieve

Our Mission Statement:  
Through Jesus we love, learn and grow

## Prayer

Lord Jesus, Thank you for the upcoming season of Advent. Please help us to understand all that you have done for us. Your loving mother held you in her heart, help us to do the same.  
Amen

## ☆☆☆ SHINING STARS ☆☆☆

Nursery	Hattie	Charlotte
Reception	Charlie B	
Year One	Hunter	
Year Two	Jackson S	
Year Three	Ben	Mia
Year Four	Maia	Niko
Year Five	Ben	Lucas
Year Six	River	Leah

WINNING HOUSE THIS WEEK

## RIBBLE

Please click to find out more  
about our school

[Facebook](#)

[Twitter](#)

'I came to give life - life in  
all its fullness.'

John 10:10

## Year Reception SODA

Reception enjoyed their SODA session today. It was lovely to welcome lots of parents and family members into our classroom.

We enjoyed showing you all of our class areas and activities. We have been looking at the Christmas story this week and loved creating our own angels with you!



## Spelling Bee

Congratulations to our super SPaG (Spelling, Punctuation and Grammar) team, who competed in a Spelling Bee at Tarleton Academy this week.

They competed in 5 gruelling rounds against other local primary schools and came away with a very commendable second place overall! The children worked brilliantly as a team and we are extremely proud of their achievement - well done!



## Year 4

Year 4 have been investigating and creating electrical circuits this week.

There were some excellent problem solving skills on show as well as good teamwork. Well done!



## Music Alive Jazz Band

This afternoon, the children enjoyed a live performance from 'Music Alive Jazz'.

They played a range of jazz styles, which the children thoroughly enjoyed - even the staff danced along!!!



## St Mary's School Open Day



You are warmly invited to visit our school on the following day:-

**Tuesday 3rd December 1.30pm to 3.00pm**

During this session you will be able to visit each of our classrooms whilst lessons are in progress and speak, not only to staff, but to the pupils too.

Staff, governors and children will be on hand to guide you around and answer any queries you may have.

**We believe our school is a very special place where children are happy in their learning and have a full range of activities to enjoy.**

We look forward to welcoming you. No booking is required, please just turn up.

## Winter Wonderland



Our Winter Wonderland Enterprise Event will be held on **Friday 6th December**. Please put this date in your diaries and come along to support this fantastic event! It promises to be a lovely start to the Christmas festivities!

## Chocolate Tombola

Our PTFA would be grateful for donations towards the Winter Wonderland chocolate tombola.

Any chocolate items you can bring to school to support this event would be much appreciated. Please bring your donations into school by **Friday 29th November**. Thank you.



## Upcoming Dates

Monday 2nd December	9.00am	Nursery Library Visit
Tuesday 3rd December	1.30-3.00pm	Open Afternoon
<b>Wednesday 4th December</b>	<b>All Day</b>	<b>School Closed to remember Hannah</b>
Friday 6th December	9.00am	Start of the Day Activity Nursery (Please join us)
Friday 6th December	4.00-6.00pm	Winter Wonderland (Please join us)
Wednesday 11th December	9.45-10.45am	EYFS/KS1 Dress Rehearsal
Thursday 12th December	All Day	Christmas Jumper Day
Thursday 12th December	2.00pm & 6.00pm	EYFS/KS1 Performance (Please join us)
Friday 13th December	Whole School	Pantomime-Cinderella (Blackburn)
Friday 13th December	12.30pm	Christmas Lunch
Monday 16th December	9.30am	KS2 Dress Rehearsal
Monday 16th December	6.00pm	KS2 Performance (Please join Us)
Tuesday 17th December	9.30am	KS2 Community Performance (Please join Us)
Tuesday 17th December	2.00pm	KS2 Performance (Please join Us)
Thursday 19th December	9.30am	KS2 Party Day
Thursday 19th December	1.00pm	KS1 Party Day
Thursday 19th December	5.30pm	Carol Service St Marys Church (Please join us)
<b>Friday 20th December</b>	<b>2.00 pm</b>	<b>School closes for Christmas</b>

## Letters Home

Whole school—Infant & Junior Christmas Shows Letter & Tickets

Whole School—Winter Wonderland Raffle

## Sports and Social Clubs

Monday	Guitar Lessons KS2	Lunchtime
Tuesday	Archery Games KS1 & KS2	3.20-4.20pm
Tuesday	Choir	3.20-4.15pm
Wednesday	Spanish Club-All Years	8.00-8.45am
Thursday	Girls Football After School Club KS1 & KS2	3.20-4.20pm
Friday	Brass Club	3.20-4.15pm

## School Photographs

Please make sure you send your child's school photograph request and payment back to school by **Friday 29th November**. Thank you.



## Admission to Primary School 2025 is now open.

If your child is in their last year of pre-school/nursery you can now apply for their primary school place at: [www.lancashire.gov.uk/schools](http://www.lancashire.gov.uk/schools).

It's quick and easy to do and you will receive email confirmation of your application.

The closing date for primary applications for September 2025 is 23.59pm on 15th January 2025.

**SCHOOL ADMISSIONS PRIMARY**

**APPLY NOW!**  
at [lancashire.gov.uk/schools](http://lancashire.gov.uk/schools)

**School and Academy places September 2025**

You must apply if your child has a 4th birthday between 1 September 2024 and 31 August 2025.

You must apply even if an older brother or sister is already at the school, or the school is linked to your child's nursery.

If you're a non-Lancashire resident apply through your own local authority.

Please read the admission criteria for your chosen schools on the website or get a copy from them.

**CLOSING DATE**  
**15 JANUARY 2025**

[lancashire.gov.uk](http://lancashire.gov.uk)

**School transport**

Need transport to school? Please don't forget to check your eligibility for free transport. Search 'school transport' at [lancashire.gov.uk](http://lancashire.gov.uk) or scan the QR code.

**Lancashire County Council**

## School Spider App

Please make sure you have downloaded our School Spider App, and remember to check it regularly, to avoid missing important information sent out from school.

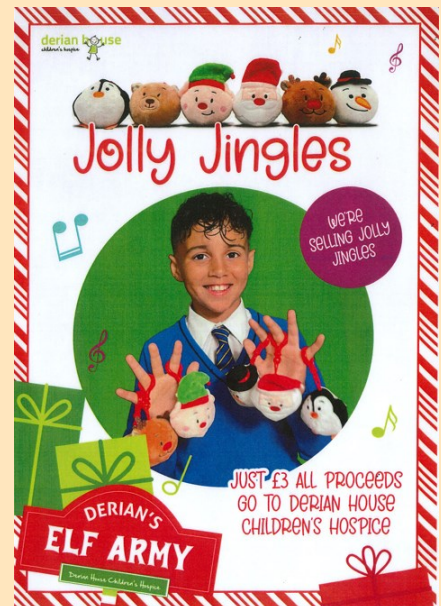
Thank you.



## Derian House

We are supporting Derian House Children's Hospice again this year by selling their Jolly Jingles. These will be on sale in the school office and cost £3.00 each. We are limiting sales to one per child, but will try to get more stock if they are popular and sell out.

Can we ask that your child brings the correct money or is prepared to make a donation beyond £3, as no change can be given. Thank you.



## What Parents & Educators Need to Know about

SNAP STREAK

97

DAYS

# SNAPCHAT

AGE RESTRICTION

13+

Snapchat is a messaging app which allows users to send images, videos and texts to others. Its best-known feature is that anything sent 'disappears' 24 hours after it's been viewed; however, users are known to take screenshots or use another device to obtain a photo of their screen. In 2023, Snapchat added a chatbot function called 'My AI'.

### WHAT ARE THE RISKS?

#### ARTIFICIAL INTELLIGENCE

My AI is Snapchat's new chatbot, which replies to questions in a human-like manner. However, the software is still in its infancy and has significant drawbacks, such as biased, incorrect or misleading responses. There have already been numerous reports of young users turning to AI for medical help and diagnoses, which could be inaccurate and therefore potentially dangerous.

#### PREDATORS AND SCAMS

Predators can exploit Snapchat's disappearing messages by, for example, telling a user they have naked photos of them and will post them unless they're paid. Snapchat's own research found that 65% of teenagers had experienced this – on this app or others. This likely isn't helped by 'SnapMaps' – a feature which highlights your exact position in real-time. This is meant to help friends keep track of each other, but could be used for more sinister reasons.

#### MY EYES ONLY

Snapchat has a hidden photo vault called 'My Eyes Only'. Teens can conceal sensitive photos and videos from parents and carers in this folder, which is protected by a PIN. You can check for this by clicking on the icon which looks like two playing cards. This takes you to the 'Memories' folder which stores photos, stories and the My Eyes Only folder.

#### SCREEN TIME ADDICTION

Snapchat prioritises user engagement, with features like streaks (messaging the same person every day to build up a high score). The app also has sections called 'Discover' and 'Spotlight', which show tailored content to each user. However, this could also be seen as an attempt to hook users into watching videos endlessly. Furthermore, constant notifications can lure people into using the app.

#### INAPPROPRIATE CONTENT

Some content on Snapchat simply isn't suitable for children. The hashtags used to group content are determined by the poster, so even an innocent search term could still yield age-inappropriate results. The app's 'disappearing messages' feature also makes it easy for young people to share explicit images on impulse – so sexting continues to be a risk associated with Snapchat.

#### ONLINE PRESSURES

Although many of Snapchat's filters are designed to entertain or amuse, the 'beauty' effects on photos can set unrealistic body image expectations – creating feelings of inadequacy in younger users. Snapchat now also has 'priority' notifications (which still get displayed even if a device is in 'do not disturb' mode), increasing the pressure on users to log back in and interact.

## Advice for Parents & Educators

#### UTILISE PARENTAL CONTROLS

Snapchat's 'Family Centre' lets you view the details of the child's account – their friends list and who they've spoken to in the last week – and report any concerns. You must invite a child to the Family Centre for them to join. To keep the child's location hidden on the app, go into settings and turn on 'Ghost Mode' and 'Hide Live Location', and ensure they know not to share their location with anyone.

#### BLOCK AND REPORT

If a stranger *does* connect with a child on Snapchat and begins to make them feel uncomfortable through bullying, pressure to send explicit images or by sending sexual images to them, the child can tap the three dots on that person's profile and report or block them. There are options to state why they're reporting that user – such as annoying or malicious messages, spam or masquerading as someone else.

#### FAMILIARISE YOURSELF

Before you allow a child to download Snapchat, download it yourself and familiarise yourself with the app. Snapchat has produced a parents' guide to the app to help you understand how it works and any protections they have in place. A link for this can be found in the sources below.

#### ENCOURAGE OPEN DISCUSSIONS

Snapchat's risks can be easier to handle if you nurture an open dialogue. For example, discuss My AI's responses to questions and how reliable they are. Talk about scams and blackmail before letting children sign up. If they're lured into a scam, encourage them to tell you immediately. Talk openly and non-judgementally about sexting, emphasising its inherent risks. Furthermore, explain how popular 'challenges' on the platform can have harmful consequences.

#### Meet Our Expert

Dr Claire Sutherland is an online safety consultant, educator and researcher who has developed and implemented anti-bullying and cyber safety policies for schools. She has written various academic papers and carried out research for the Australian government comparing internet use and sexting behaviour of young people in the UK, USA and Australia.



#WakeUpWednesday

The National College®

Source: See full reference list on guide page at: <https://nationalcollege.com/guides/snapchat-2021>

X @wake\_up\_weds

f /www.thenationalcollege

ig @wake.up.wednesday

music @wake.up.weds

Users of this guide do so at their own discretion. No liability is entered into. Current as of the date of release: 27.11.2024